



**ROMANO GOLF VILLAS**  
LUXURY HOME

**VILLA 7**  
GENERAL VIEW

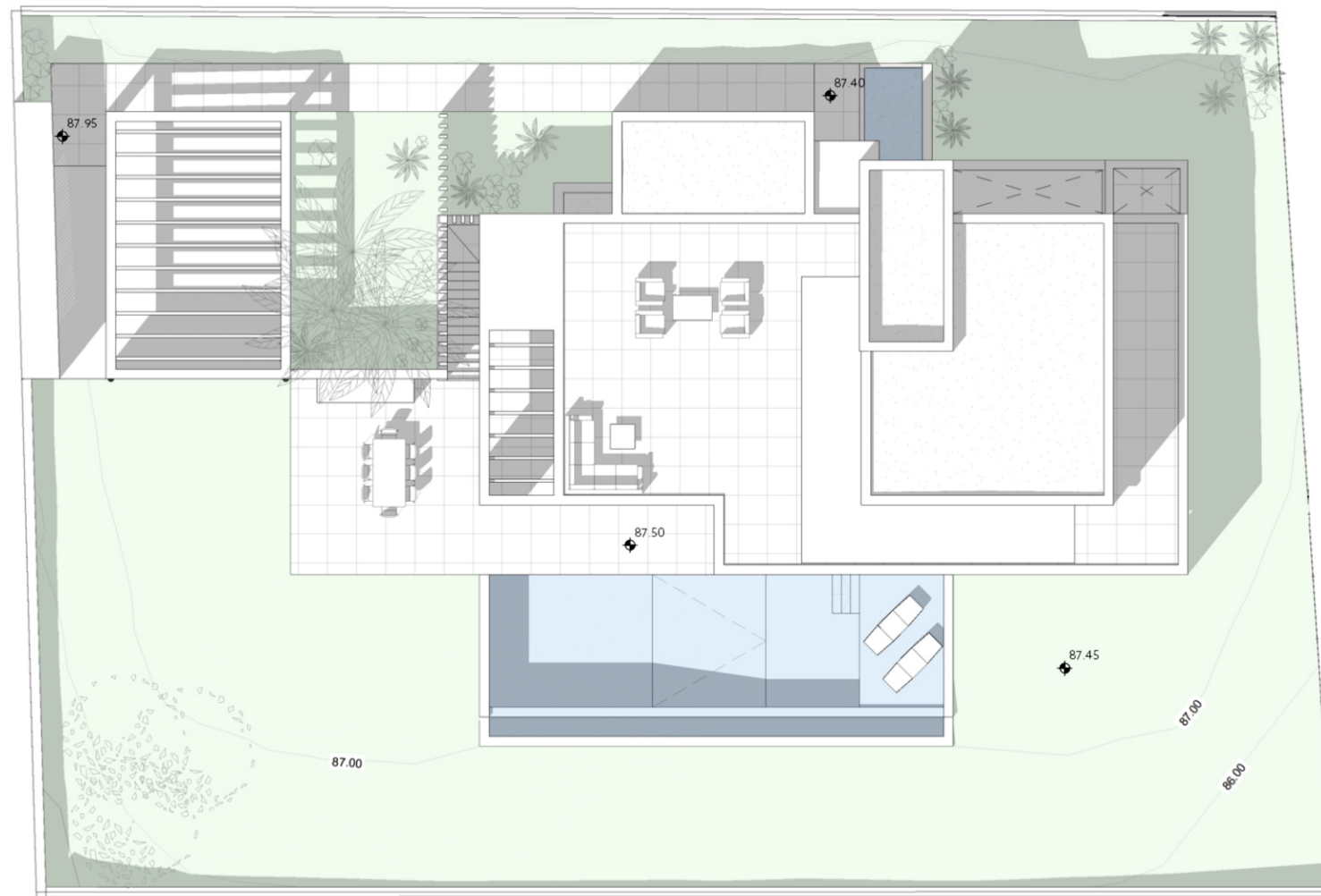
**METRES**

Plot	1.079,15 m <sup>2</sup>
Parking	45,15 m <sup>2</sup>
Pool	57,61 m <sup>2</sup>
Dwelling	435,46 m <sup>2</sup>

**Architect**  
Serrano Font

**Developer**  
Obras y Servicios Vialti

[romanogolfvillas.com](http://romanogolfvillas.com)



During the development of the project, the Management reserves the right to make the necessary changes, due to legal, administrative, technical, commercial or supply requirements, in distributions, dimensions and surfaces. In no case these changes will imply a modification of the stipulated purchase price. The furniture and any decorative elements that appear on the plans are simply a recreation for orientative and non-binding purposes, in no case are they included in the purchase price of the villa.



**ROMANO GOLF VILLAS**  
LUXURY HOME

## VILLA 7 GROUND FLOOR

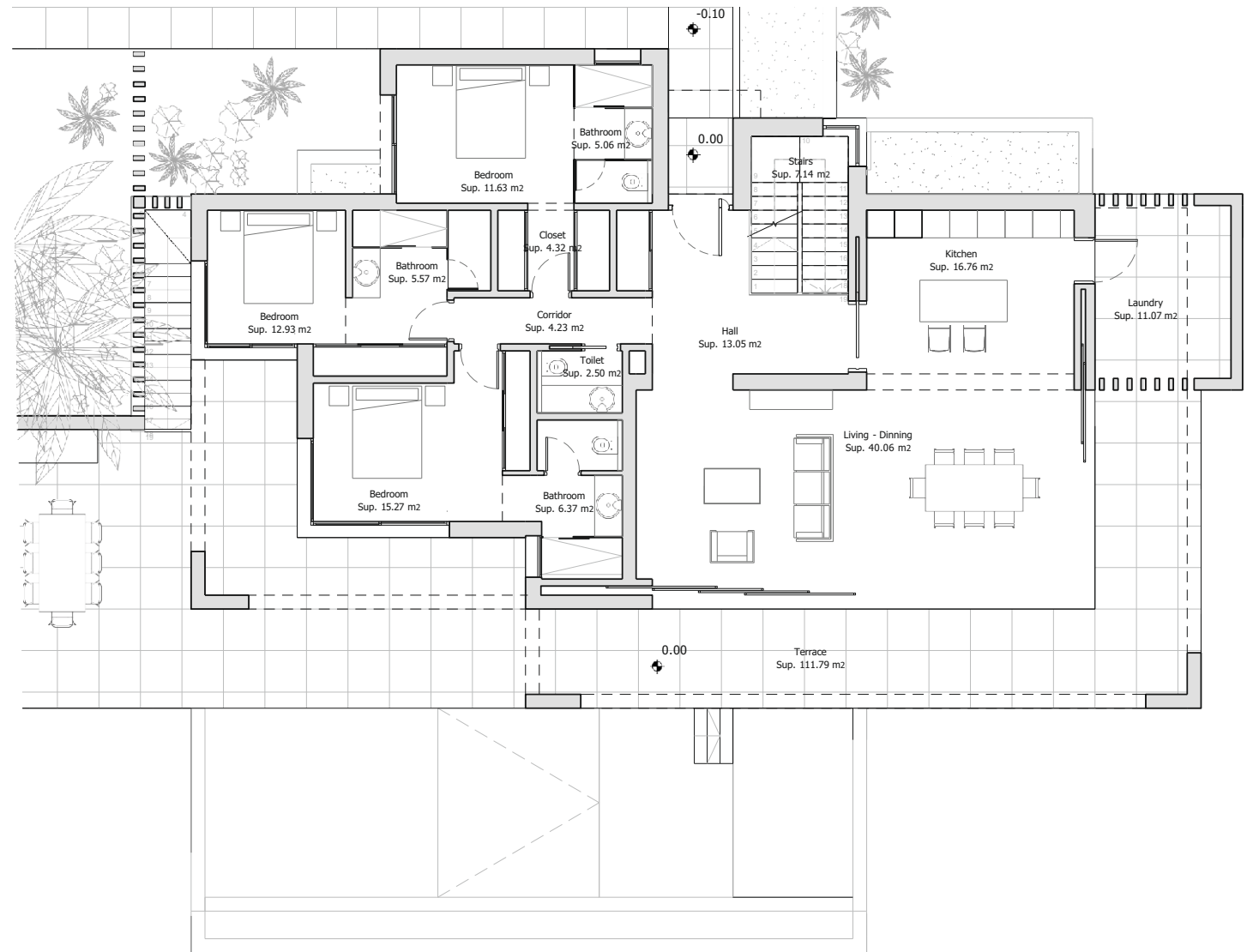
### METRES

Terrace	121,33 m <sup>2</sup>
Useful	55,24 m <sup>2</sup>
Built	71,75 m <sup>2</sup>

**Architect**  
Serrano Font

**Developer**  
Obras y Servicios Vialti

[romanogolfvillas.com](http://romanogolfvillas.com)



During the development of the project, the Management reserves the right to make the necessary changes, due to legal, administrative, technical, commercial or supply requirements, in distributions, dimensions and surfaces. In no case these changes will imply a modification of the stipulated purchase price. The furniture and any decorative elements that appear on the plans are simply a recreation for orientative and non-binding purposes, in no case are they included in the purchase price of the villa.



**ROMANO GOLF VILLAS**  
LUXURY HOME

**VILLA 7**  
**FIRST FLOOR**

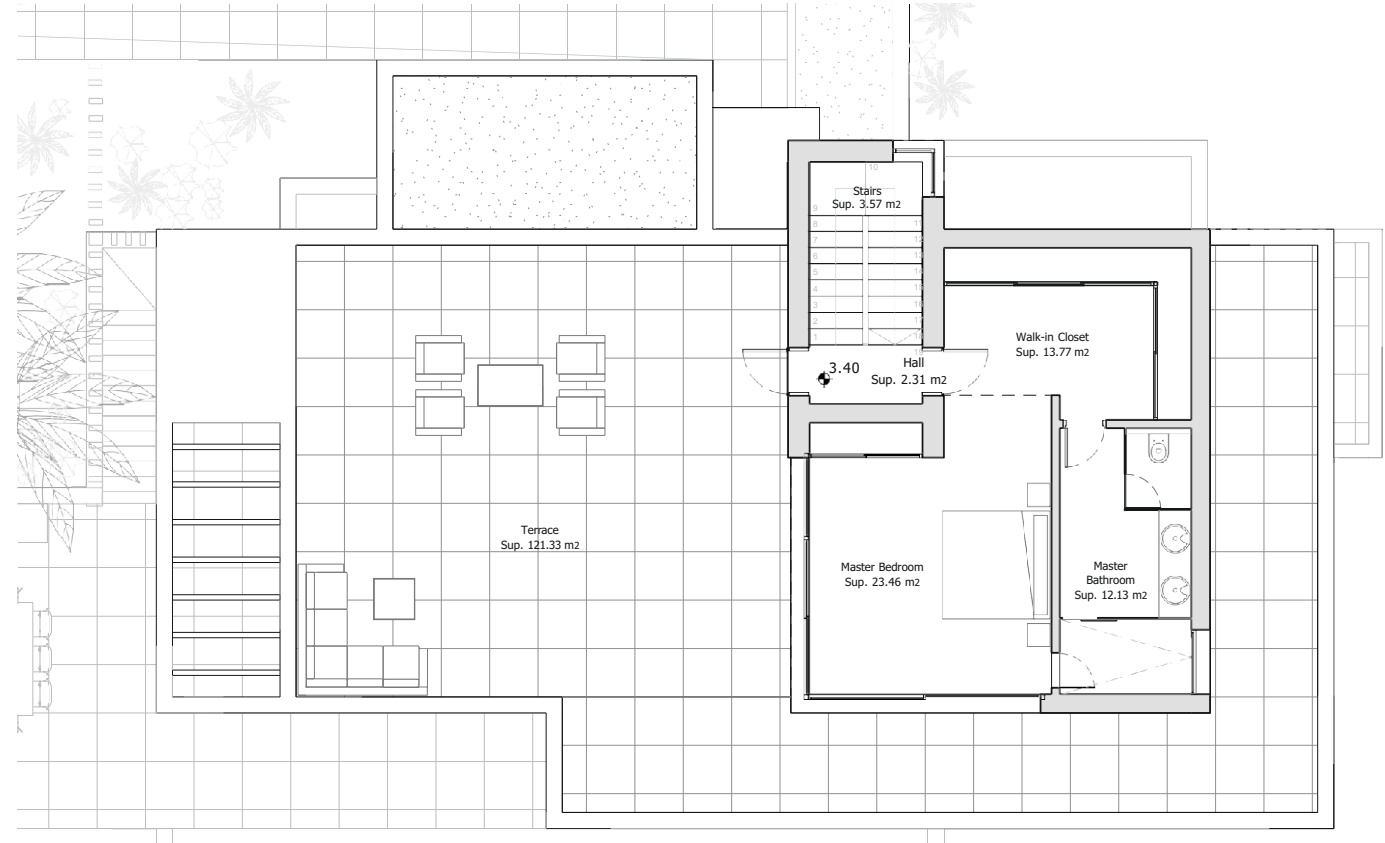
**METRES**

Solarium	_____	<b>121,33 m<sup>2</sup></b>
Useful	_____	<b>55,24 m<sup>2</sup></b>
Built	_____	<b>71,75 m<sup>2</sup></b>

**Architect**  
Serrano Font

**Developer**  
Obras y Servicios Vialti

[romanogolfvillas.com](http://romanogolfvillas.com)



During the development of the project, the Management reserves the right to make the necessary changes, due to legal, administrative, technical, commercial or supply requirements, in distributions, dimensions and surfaces. In no case these changes will imply a modification of the stipulated purchase price. The furniture and any decorative elements that appear on the plans are simply a recreation for orientative and non-binding purposes, in no case are they included in the purchase price of the villa.



**ROMANO GOLF VILLAS**  
LUXURY HOME

**VILLA 7**  
**BASEMENT**

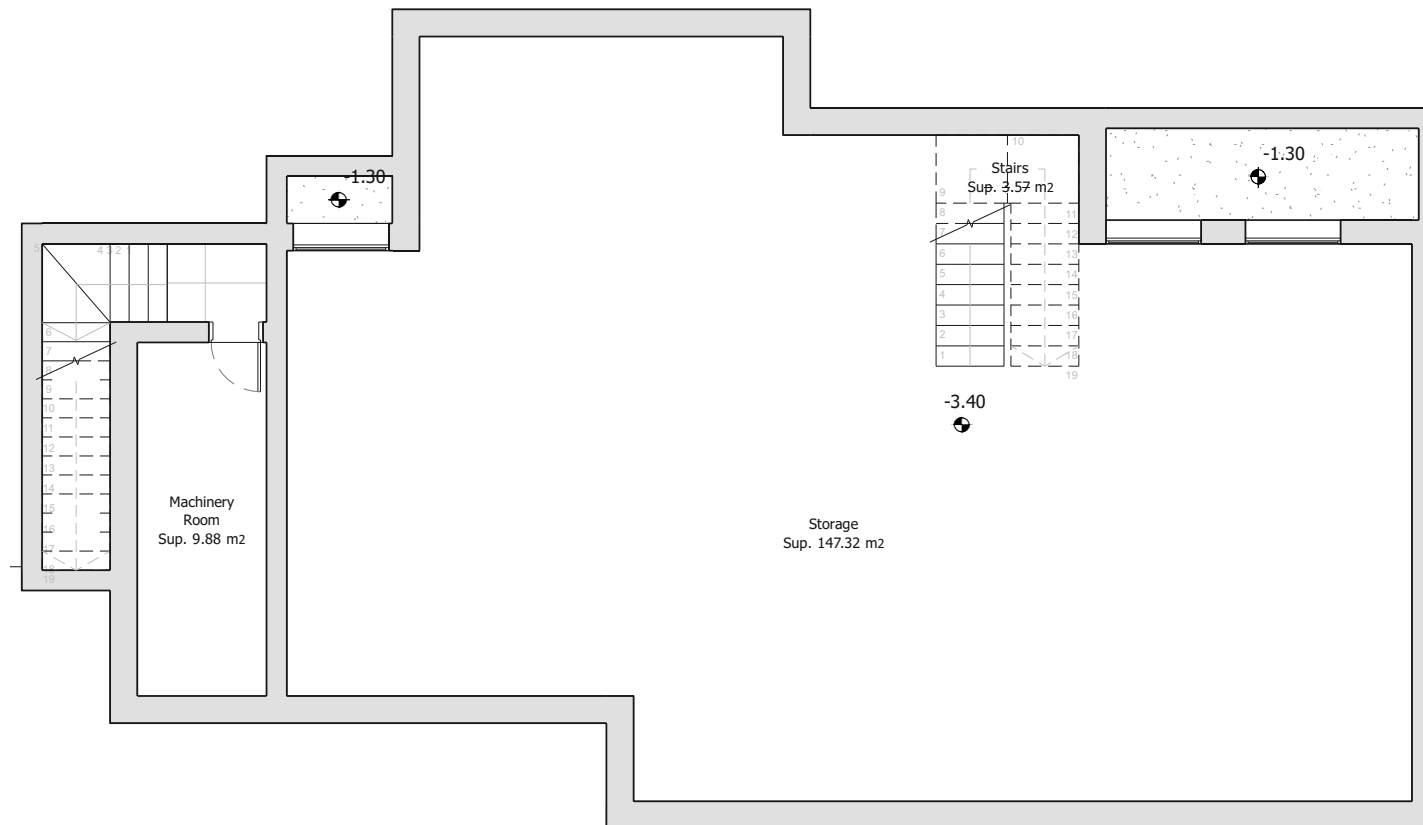
**METRES**

Useful \_\_\_\_\_ **160,77 m<sup>2</sup>**  
Built \_\_\_\_\_ **186,36 m<sup>2</sup>**

**Architect**  
Serrano Font

**Developer**  
Obras y Servicios Vialti

[romanogolfvillas.com](http://romanogolfvillas.com)



During the development of the project, the Management reserves the right to make the necessary changes, due to legal, administrative, technical, commercial or supply requirements, in distributions, dimensions and surfaces. In no case these changes will imply a modification of the stipulated purchase price. The furniture and any decorative elements that appear on the plans are simply a recreation for orientative and non-binding purposes, in no case are they included in the purchase price of the villa.